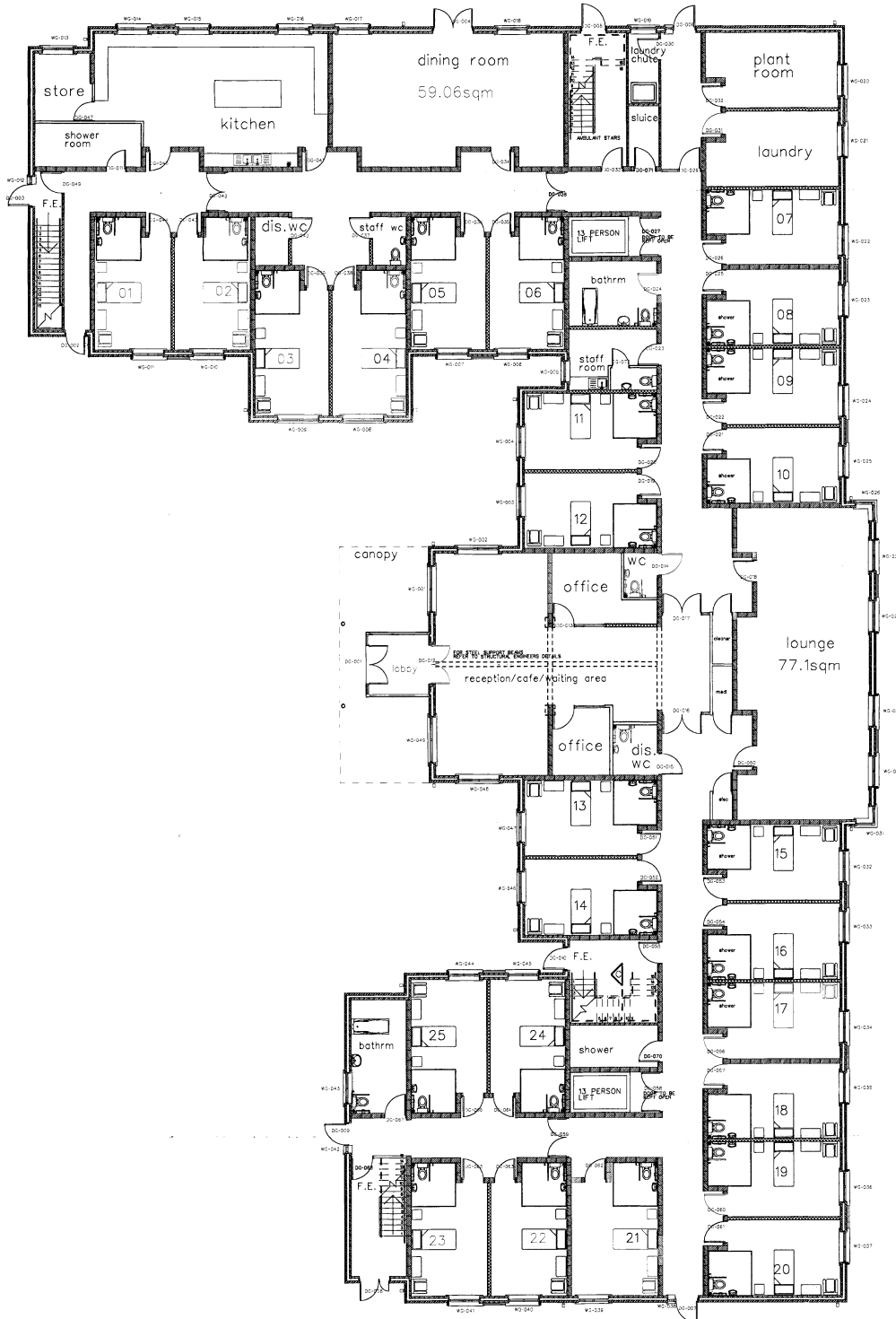


Ground Floor of Built Care Home



25 TOTAL BEDROOMS

19 SINGLE BEDROOMS @ 19.0 SQV

INCLUDING POD ENSUITE

06 SINGLE BEDROOMS @ 19.0 SQM

INCLUDING POD ENSUITE WITH SHOWER

INTERNAL FLOOR AREA =1,297 SQM