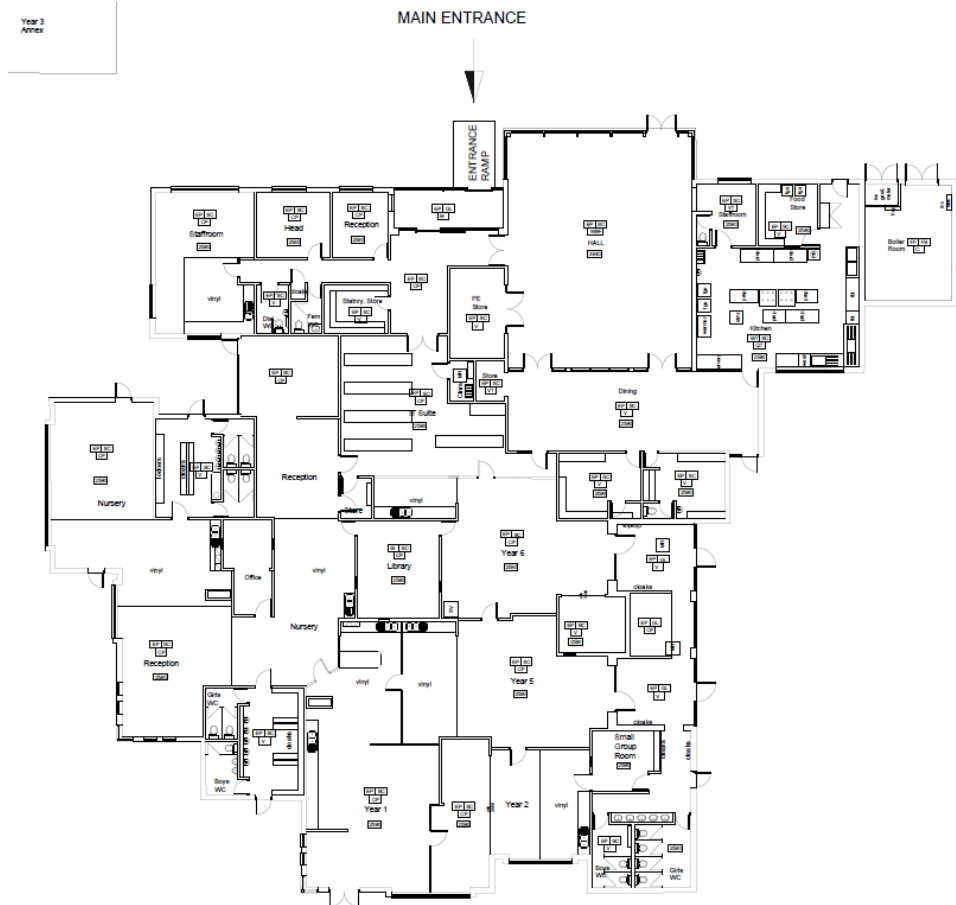


Existing Floor Plan



Issued for planning application OK
 Rev Description On Chk

Drawing Status PRELIMINARY APPROVAL
 INFORMATION TENDER CONSTRUCTION



Stockton-on-Tees
 BOROUGH COUNCIL
 Big plans, bright future

Economic Growth & Development Service
 Director of Economic Growth & Development
 Stockton-on-Tees Borough Council, 21-23
 P.O. Box 258, Kingfisher House, Billingham, 1532 2YU.
 Tel: 0191 632 6666 email: enquiries@stockton.gov.uk

Project: Bowsfield Primary School