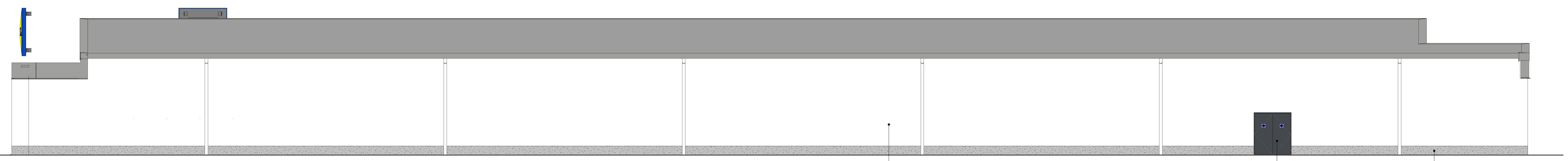
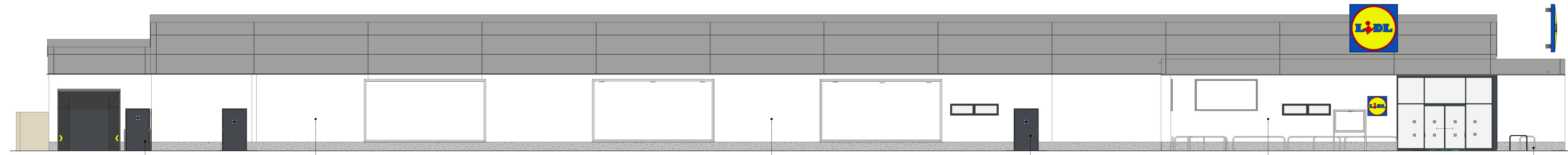


Revision	Description	Drawn By	Checked By	Date
P1	First Issue	KS	KDH	09.11.17
P2	Store Spec updated	KS	KDH	23.05.18



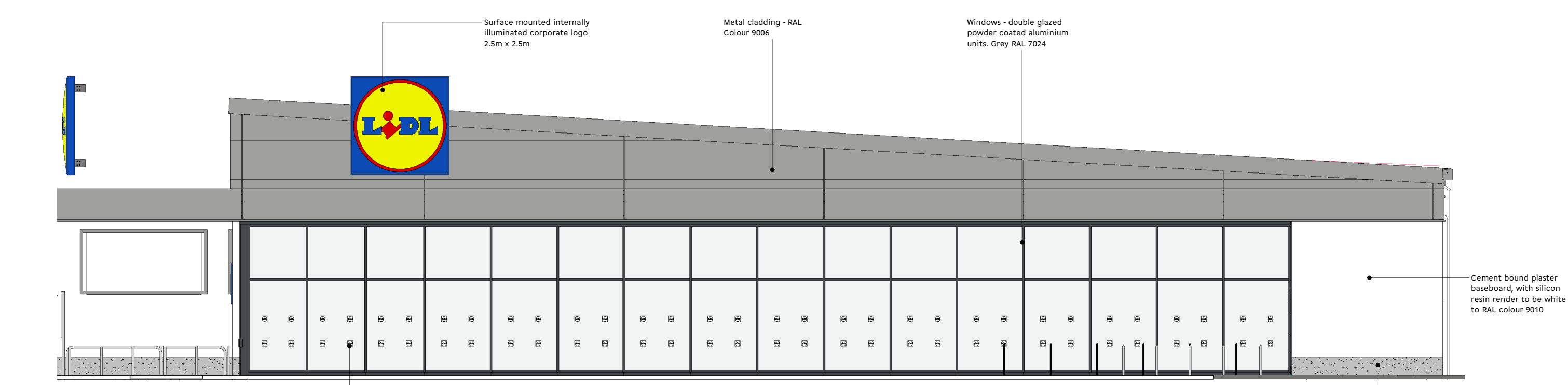
North Elevation
1 : 100

Cement bound plaster baseboard, with silicon resin render to be white to RAL colour 9010.
Powder coated steel door coloured grey to RAL 7024.
Plinth render to be grey to RAL colour 7038.



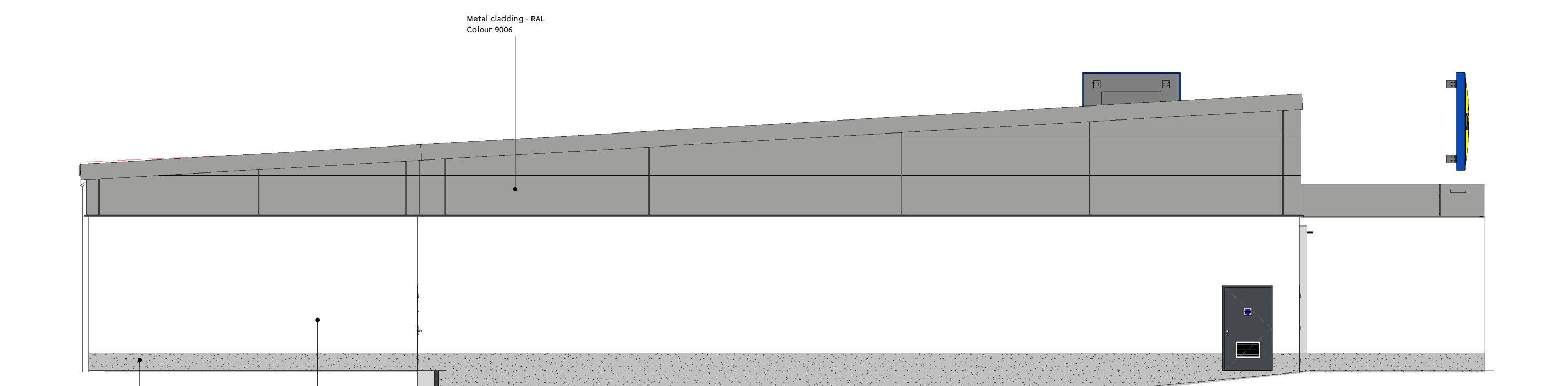
South Elevation
1 : 100

Powder coated steel door coloured grey to RAL 7024.
Cement bound plaster baseboard, with silicon resin render to be white to RAL colour 9010.
Cement bound plaster baseboard, with silicon resin render to be white to RAL colour 9010.
Powder coated steel door coloured grey to RAL 7024.
Cement bound plaster baseboard, with silicon resin render to be white to RAL colour 9010.
Plinth render to be grey to RAL colour 7038.



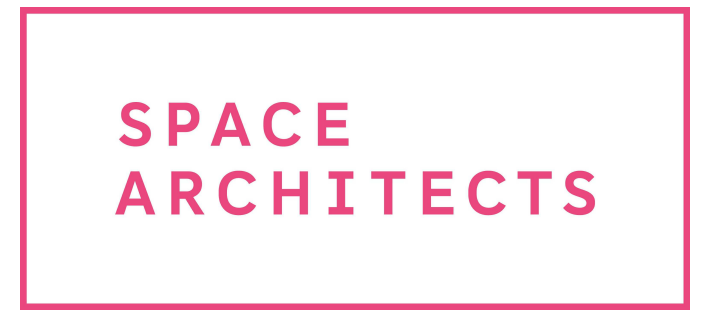
East Elevation
1 : 100

Surface mounted internally illuminated corporate logo 2.5m x 2.5m.
Metal cladding - RAL Colour 9006.
Windows - double glazed powder coated aluminium units. Grey RAL 7024.
Cement bound plaster baseboard, with silicon resin render to be white to RAL colour 9010.
Plinth render to be grey to RAL colour 7038.
Manifestations to be installed in accordance with LIDL specification.



West Elevation
1 : 100

Plinth render to be grey to RAL colour 7038.
Cement bound plaster baseboard, with silicon resin render to be white to RAL colour 9010.



Project					
Lidl - Ingleby Barwick					
Drawing Title					
General Arrangement Elevations - Sheet 1					
Project No.	Originator	Volume	Level - Type - Role - Class - No	Suitability	Revision
07381	SPACE	00	XX-DR-A-02-0001	S3	P2
File	Scale at A1				
07381-SPACE-00-XX-DR-A-02-0001-S3-P2	1 : 100				